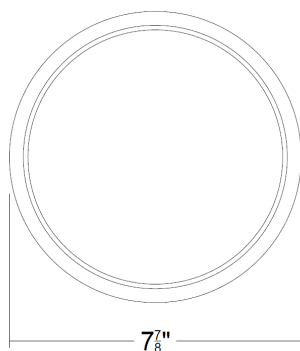


7IN ROUND SLIM SURFACE

just led + lights



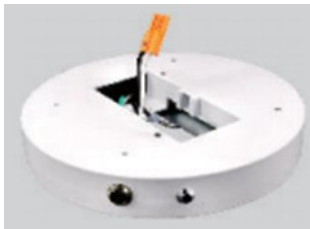
SPECIFICATIONS

Watts	15W
Lumens	850LM (90CRI), 900LM (80CRI)
Efficacy	55LM/W (90CRI), 60LM/W (80CRI)
CRI	80, 90
Input	120V
Dimming	Dimmable to 10% with most standard TRIAC dimmers.
Temperature	3000K, 4000K, 5000K, CCT adjustable 3000-5000K
Dimensions	Ø 7.875" x 0.625"H
Material	Aluminum Backplate, Acrylic Lens, Plastic Trim
Trim Finish	White, Black, Brushed Nickel Interchangeable Trim Rings are Optional
Installation	80CRI: Compatible with Standard & pancake j-box 90CRI: Compatible with Standard j-box only
Features	Integral driver allows installation in ceilings with limited plenum space. Features edge-lit technology for even illumination. Provides an affordable alternative to IC-Airtight housings and Fire-Rated boxes.
Certifications	ETL listed Wet Locations, CA Title 24, JA8, Energy Star. (Note: T24 & JA8 apply to 90CRI only)
Lifespan	50,000 Hours

ORDERING GUIDE

Part	Temperature	CRI	Finish	Options
JLAL-011-CLG-03	30K: 3000K	80: 80CRI	WH: White	EM: Emergency Battery Backup
	40K: 4000K	90: 90CRI	BK: Black	TR-BK: Black Trim Ring
	50K: 5000K		BN: Brushed Nickel	TR-ORB: Oil Rubbed Bronze Trim Ring
	CCT3: 3000-5000K			TR-BN: Brushed Nickel Trim Ring
				TR-CP: Copper Trim Ring

EMERGENCY BATTERY BACKUP



FEATURES

Self Test Function
Lithium Battery Backup Module
24 Hour Recharge Time
90 Minute Operation from Battery
Over-charge/Discharge Protection
Die Cast Aluminum Construction
Dimensions: 8" L x 8" W x 1"H

CCT3 WITH SLIDE SWITCH BOX



LED INDICATOR COLORS/FUNCTIONS

Red: Battery is Charging

Green: Battery at Full Charge

Yellow: Check System - Possible battery replacement or system maintenance required

Green Flashing: Monthly or annual test mode is running

Off: Indicates a power outage and battery backup is in emergency mode

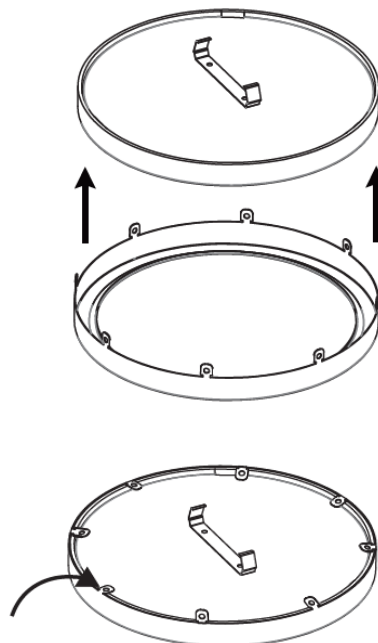
INTERCHANGEABLE TRIM RINGS

Interchangeable trim rings available to quickly change the trim finish of the 7in Round Slim Surface Light.

Steel Construction with finishes available in Black, Oil Rubbed Bronze, Brushed Nickel or Copper.

INTSTRUCTIONS

1. Uninstall from ceiling prior to adding trim ring
2. Insert over existing trim
3. Bend metal tabs slowly to avoid breaking the tabs. DO NOT pull back once secured.



INSTALLATION



TOOLS AND MATERIALS REQUIRED:

Phillips
Screwdriver

Wire Cutters



Pliers



Wrench

Wiring supplies
as required by
the Canadian
Electrical Code
and/or the
Quebec
Electrical code

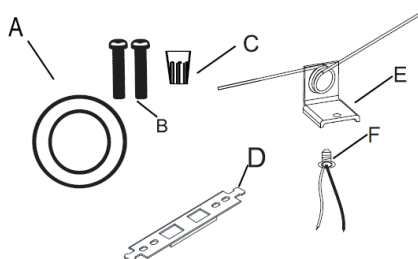
SAFETY PRECAUTIONS:

1. **TURN OFF ELECTRICAL POWER BEFORE STARTING INSTALLATION OF LIGHT FIXTURE.**
2. **THIS PRODUCT MUST BE INSTALLED IN ACCORDANCE WITH THE APPLICABLE INSTALLATION CODE BY A PERSON FAMILIAR WITH THE CONSTRUCTION AND OPERATION OF THE PRODUCT AND THE HAZARDS INVOLVED.**
3. **CAUTION RISK OF FIRE . CONSULT A QUALIFIED ELECTRICIAN TO ENSURE CORRECT BRANCH CIRCUIT CONDUCTOR.**
4. **FOR EXETEMAL USE ONLY,RECOMMEND APPLYING WATERPROOF SILICONE TO SEAL AROUND TRIM AND CEILING.**

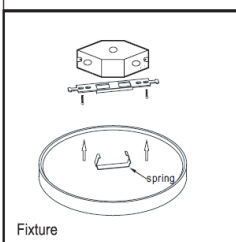
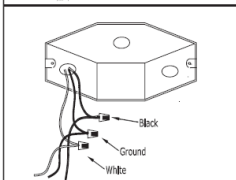
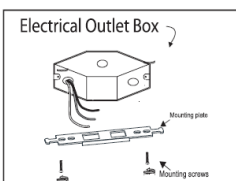


PACKAGE CONTENTS

PART	DESCRIPTION	QTY	NOTE
A	LED Low Profile Flushmount	1	
B	Mounting screws	2	
C	Wire nut	3	
D	Mounting plate	1	
E	Springs	2	Optional
F	E26 lamp holder	1	Optional



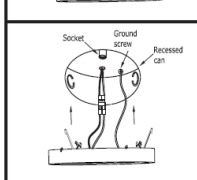
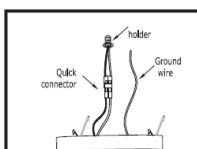
Option #1: FLUSH MOUNT



1. Prior to installation, install mounting plate into the electrical outlet box with mounting screws. Drive screws completely to the end of the junction box.
2. Connect supply wires to wires on fixture with wire nuts or push wires into Quick Connector. Connect white to white, black to black, and copper wire to copper wire as grounding connection.
3. Completing the installation by pushing the fixture into the mounting plate

THIS LED light is suitable to be dimmed by LUTRON # CTCL- 153P ,PVCL-153P

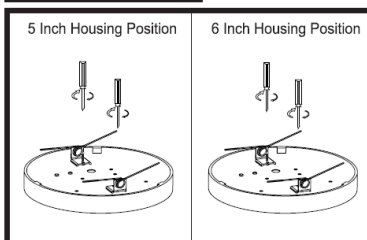
Option #2: RETROFIT A RECESSED CAN



Insert wires into Quick connector. Black to black and white to white. Attach ground wire to ground screw in recessed can.

Turn E26 lamp holder into socket base.

Connect Quick Connectors
Tuck all wires into recessed can. Squeeze springs and push up into recessed can.



MADE IN CHINA